



# Eclipse

Recessed floor/ wall spotlight, ideal for the lighting of steps, sidewalks, paths and gardens. It has been designed specifically to produce low glare illumination to walls and columns, with a glare shield and deep recessed lamp.

Material Body and front made of anticorodal aluminium

Lens made of tempered satinized glass /

No. 2 standard finishings

Led no. 1 x 4 W

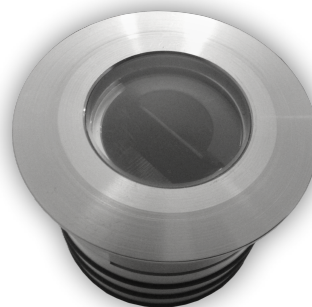
Power absorption 4 W

Connection Series connection respecting polarities

Wiring Provided with a 50 cm long cable  
Installation On Floor / Wall with housing (included)

Driver switching (not included) 350mA ( 4 W)

Photometries Ref. Photometrics Page



with Half Moon Lens Cover for Glare Control

**IP 67**



Code	Options	Supply	N° LED	LED Color	Optics	Watt	Finish
EC	0	I CC	1	3 - 2700 K	2 - 16° X 40°	4	S - Steel O - Black

