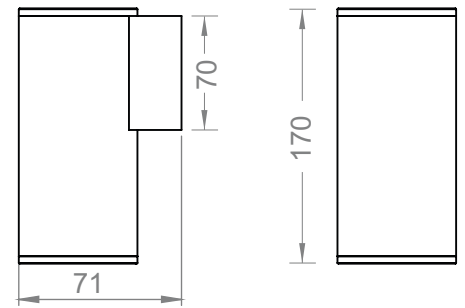
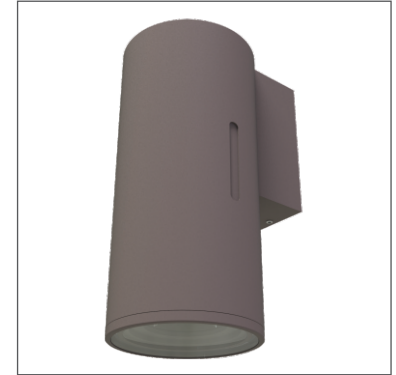


Beacon M1

TECHNICAL DATA

Application	Wall Surface Mounted
Location	Outdoor/ Indoor
Light Source	LED
Optics	12°, 24°, 36°, 45°, 60°
LED Life time (L80B10)	50000 hours
Input Voltage / Current	110-240V AC(43-60Hz)
Control Gear	In-built
Connection details	Parallel Connection
Installation	Wall Surface mounted
Weight	1,4Kg
Dimension	Ø59 x 170mm
Supply	110-240V AC
LED Module	High-power LEDs on metal-core PCB. Collimating lens made of optical polymer/pmma
Anti-Glare	Option
Electric Protection	EMC, inrush current
Electrical Class	1
Working Temperature	-25°C - +50°C



FINISHING

Materials	Die-cast aluminium
Finishing	Black, Grey
Diffuser	Tempered Glass

Family	WATT	CCT	Optics	Finish	Power	Dimming	Options
BE - Beacon-M1	6 - 6W	27-2700K	12 - 12°	B - Black	AC - AC110-240V	N - None	XXX
	9 - 9W	30-3000K	24 - 24°	G - Grey			
	12 - 12W	40-4000K	36 - 36°				
		50-5000K	45 - 45°				
		65-6500K	60 - 60°				

Sample:BE - 6 - 27 - 12 - B - AC - N - XX

CONNECTION DIAGRAM

